

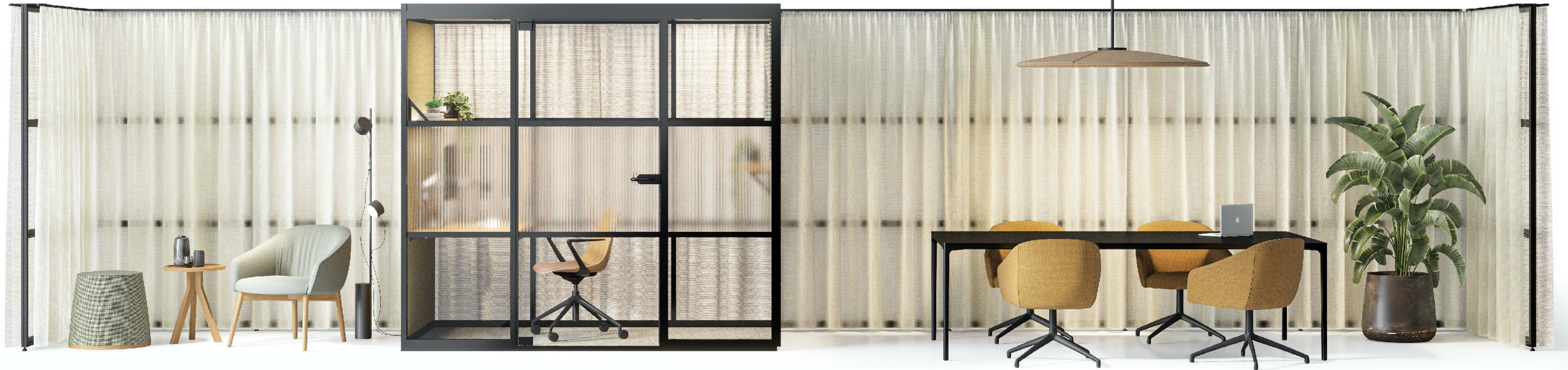
# Mews

Habitats for a New Work Landscape





# Mews



A destination space for a new era.



# Positive Spaces<sup>+</sup>

Using the Negative



# Positive Spaces<sup>+</sup>

Remove the Negative Concept

Exploring the space around Mews is just as rewarding as Mews itself. We took the negative space, which is the space between, and surrounding an object, to form another space. The Mews pods can be the focus of the space, but the negative space can be just as important creating ideal spaces for collaborations and bonding with others. Mews removes the negative and make positive spaces.







# Discover your natural habitat in the new work landscape

It's clear that remote and hybrid working is here to stay, even after the pandemic recedes. While some workers will gradually find their way back to in-person workplace settings, this is just the beginning of working from anywhere for many others. Research by LifeSize states that video meetings improve productivity by 50%, and 90% of people find it easier to get their point across. With 76% of us using video conferencing for remote work. These permanently hybrid and remote teams need the space and tools to communicate and collaborate just as effectively and perhaps more frequently than before. The Mews landscape habitats are designed to fulfil the needs of the modern workplace.

Mews enhances the ergonomics of your space through air quality, temperature and lighting to create habitats that improve the quality of work, connection, and collaboration.





“We used to rely on architectural intervention to divide spaces and define privacy, the new workplace landscape has shifted to habitable spaces with high levels of function and flexibility. But we need more. Spaces that not only work well but make us feel good too.”



# Mews

Focus

A quiet space designed for visual and acoustic privacy. Lighting modes created for video conferencing and prolonged pieces of work with ventilation that maintains comfortable temperature and quality of air.

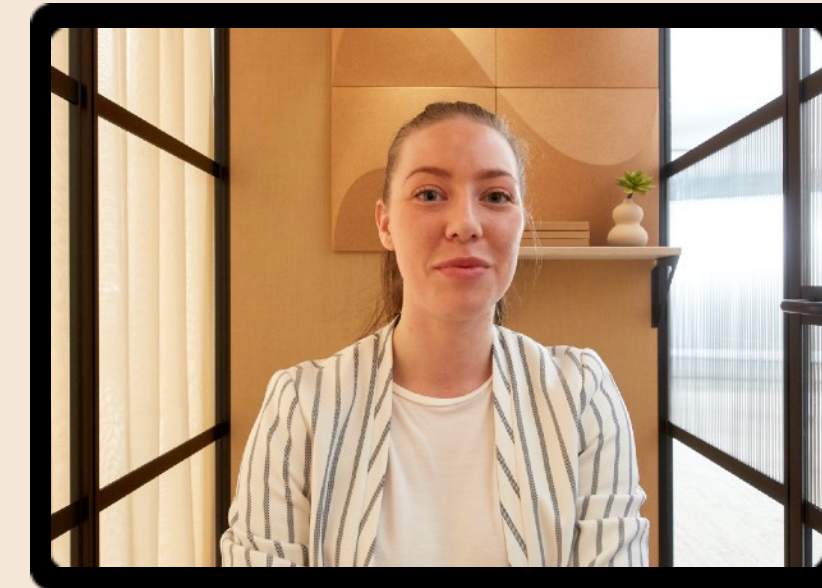






# Lighting Design

## Video Conferencing



### Lighting

We have all become very aware of how we look on camera, from the first moment we log in to our video call to the moment we catch a glimpse of our faces on the attendee screen. Having that human connection is vital to gauge response and better understand the conversation. Creating a flattering environment to be seen is paramount, boosting confidence and projecting the right message for your brand. There are several elements to control to create a complimentary visual for video conferencing: lighting, colour, shape, and texture.

The VC lighting system creates loop lighting, where a small shadow of the subjects noses on their cheeks and avoids dark shadows around the eyes. The light source is slightly higher than eye level and about 30-45 degrees from the camera and bounces light off the back wall to distribute a defused, soft light evenly across the face. The rear downlight against the back wall provides a halo effect, a flattering contrast around the head.

Whilst your Focus pod can be upholstered in any colour, on the desk wall, we recommend using natural tones that reflect a flattering colour across the face and the introduction of subtle texture can introduce interest and create visual privacy too.





# Mews

## Connect

A meeting space designed for visual and acoustic privacy. Controllable lighting creates a softer space to focus and share ideas. Ventilation that maintains comfortable temperature and quality of air over longer periods.





# Ergonomics

## Comfort & Performance



### **Air Quality & Temperature**

Our new ventilation system allows fresh air to be drawn in - hot air extracted out. All pods are also set to deliver 12 air changes per hour as a 'nominal' setting. Providing quality air flow and a stimulating atmosphere whilst maintaining the ambient temperature.

### **Acoustics**

Mews offers high levels of acoustic insulation, achieved through innovative sound absorbent wall panels - disconnecting you from the wider environment to focus, and providing acoustic privacy for calls.

### **Connectivity**

Power to recharge USB A+C with HDMI connectivity to a screen recommended size 32".

### **Tables**

Standard tables have an anti microbial Fenix top and rounded corners to maximise on space.



# Mews

Connect Open

An informal meeting space designed for keeping in touch with your space and people around you. The slatted ceiling creates an open well lit space with different level of attachment.







**Mews**  
Collaborate



# Mews

Collaborate

The space around the pods delineated by curtains on the Mews grid system, creates spaces perfect for collaboration and informal lounge settings.









# Mews

## Approved Kvadrat Curtains

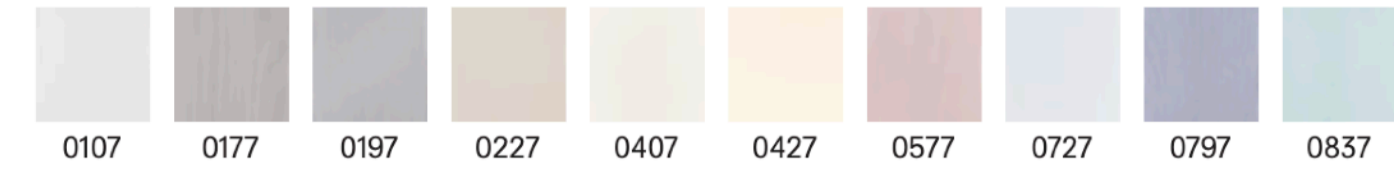


Semi-Transparent

### Kvadrat Daybreak 2



### Kvadrat Drops Acoustic

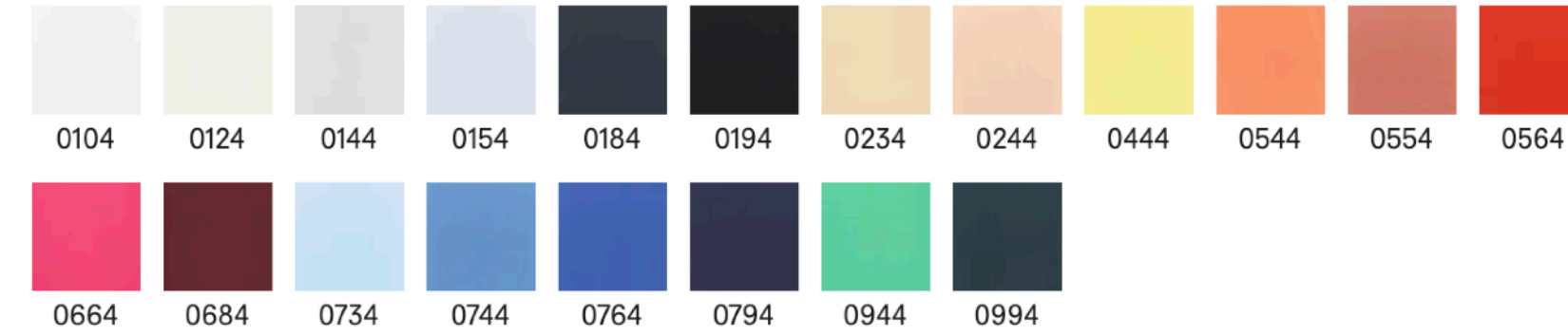


### Kvadrat Ginger 2

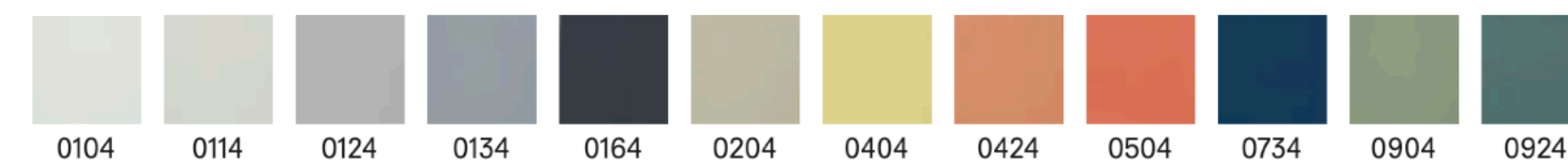


Opacity

### Kvadrat Campas 300

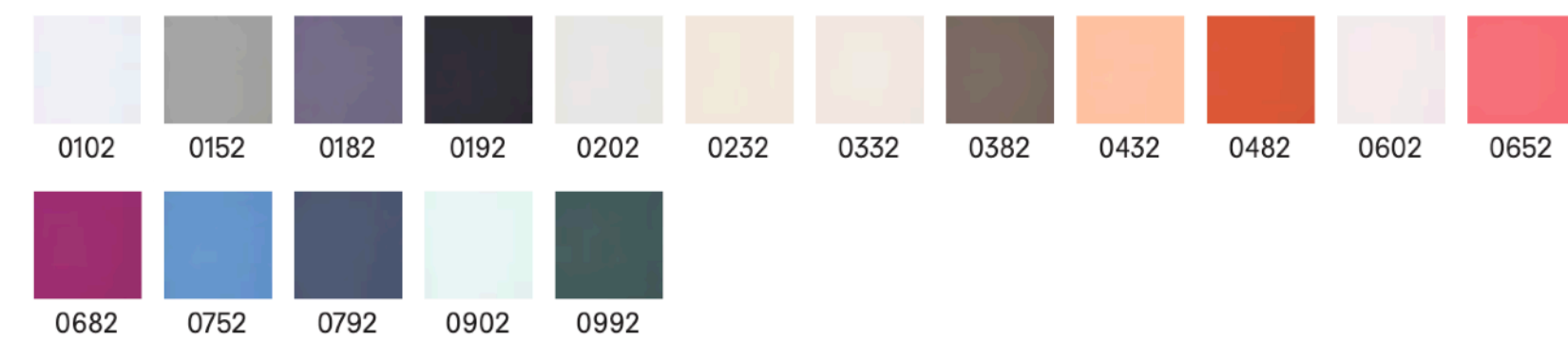


### Kvadrat Haze



Opaque

### Kvadrat Dawn 2









# Why **Mews**?

## 9 Reasons

- Increased need for private video conferencing and focus space.
- Effective use of social spaces around the pods.
- Comfortable proportions for users and compact footprint.
- Simple to specify and plan.
- Easy to 'hack' and make stylish and unique configurations.
- Diverse modules to build landscapes perfect for the users needs.
- Specification easily updated and modified
- Acoustic & visual privacy
- Environmentally sound construction



# Mews

In Details



# Materiality & Texture





# Features





# Mews

Product Partners



## Mews Product Partners

**Mews**  
Focus



**Paloma**



**Ola**



**Trinetic**

**Mews**  
Open & Connect



**Myriad**  
Mews Version



**Hemm**  
Mews Version



**Reef**  
Mews Version



# Mews

Specification



# Mews

## Standard Features



**Mews Focus Pod: MWS/FP**  
Standard Specification

- Frame & Glazing Bars: Black RAL 9005
- Levelling plinth including Floor Tiles: Modulys Grind 130
- Left Wall: Fabric Band 1 Inner & Outer
- Right Wall: Fabric Band 1 Inner & Outer
- Glass Door: 8mm toughened
- Glass Panels Front: 6mm toughened
- Glass Panels Rear: 6mm toughened
- Work Table: Black Fenix with Ply Edge
- Shelving: Illuminated Shelf Over Desk
- Pod Environment Lighting: 2x Ultra low glare lighting units with wireless switch
- Laptop Arm: Flow Ollin
- Power: OE Ply Unit - 2x Power inc. twin USB Charge (A&C)
- Ceiling Tiles: Acoustic Upholstered in Camira Nexus Chalk
- Coat Hook: 1x Muuto Dot Wood 6.5cm in Black
- Roof Mat: Acoustic Panel
- Airflow Unit: Included

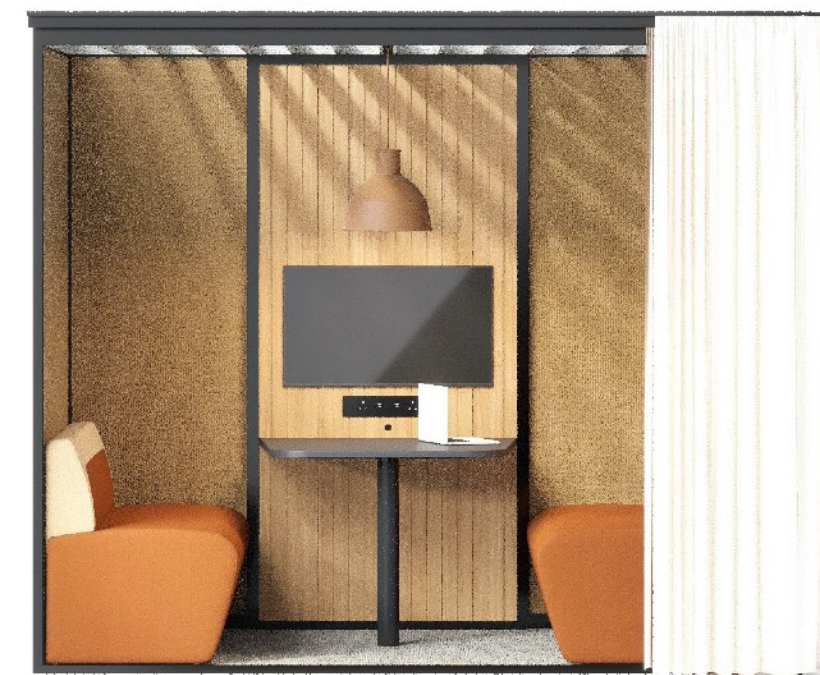


**Mews Connect Pod: MWS/CT**  
Standard Specification

- Frame & Glazing Bars: Black RAL 9005
- Levelling plinth including Floor Tiles: Modulys Grind 130
- Left Wall: Fabric Band 1 Inner & Outer
- Right Wall: Fabric Band 1 Inner & Outer
- Internal Centre Column: Cork
- Glass Door: 8mm toughened
- Glass Panels Front: 6mm toughened
- Meeting Table: Black Fenix Top with Ply Edge & Black Stem
- Pendant Lighting: Muuto Unfold in Dark Grey
- Pod Environment Lighting: 2x Ultra low glare lighting units
- Power: Central Integrated OE Petra unit with 2x power & twin USB
- Ceiling Tiles: Acoustic Upholstered in Camira Nexus Chalk
- Coat Hook: 2x Muuto Dot Wood 6.5cm in Black
- Roof Mat: Acoustic Panel
- Airflow Unit: Included

**Exclusions:**

Does not include Hemm or Myriad Seating



**Mews Open Pod: MWS/OP**  
Standard Specification

- Frame & Glazing Bars: Black RAL 9005
- Levelling plinth including Floor Tiles: Modulys Grind 130
- Left Wall: Fabric Band 1 Inner & Outer
- Right Wall: Fabric Band 1 Inner & Outer
- Internal Centre Column: Cork
- Meeting Table: Black Fenix Top with Ply Edge & Black Stem
- Pendant Lighting: Muuto Unfold in Dark Grey
- Power: Central Integrated OE Petra unit with 2x power & twin USB
- Coat Hook: 2x Muuto Dot Wood 6.5cm in Black
- Slatted Roof

**Exclusions:**

Does not include Hemm or Myriad Seating



**Mews Collaborate: MWS/CB**

- Mews 'U' free standing frame available as frame, with internal curtain, external curtain and both internal and external curtains.
- Available in a single width configuration only



# Mews

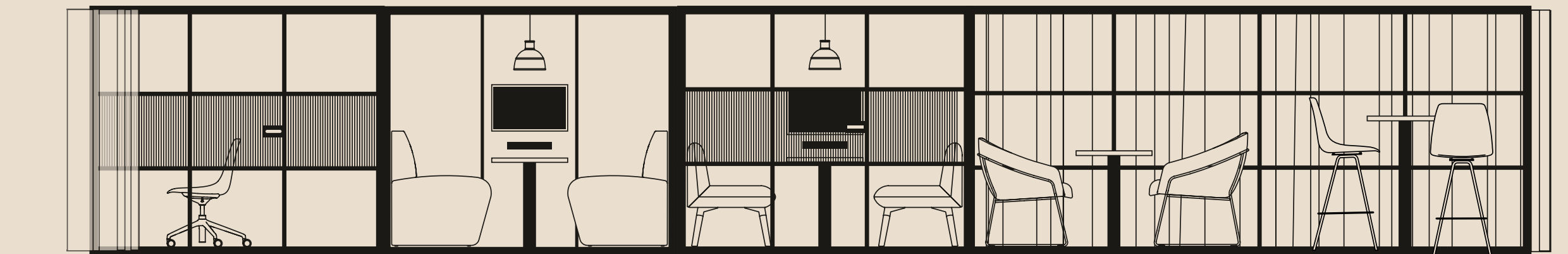
## Fabric Panel Bands



Fabric Band	Fabric Range	Description
1	<b>Camira Lucia*</b>	Lucia is an ever popular crêpe weave synthetic panel fabric. It's manufactured from 100% recycled polyester saving virgin raw materials and for a reduced environmental footprint.
1	<b>Camira Xtreme</b>	Xtreme is a modern crepe weave fabric made from 100% post-consumer recycled polyester, diverting waste from landfill and saving virgin raw materials.
1	<b>Camira Carlow*</b>	This dobby weave panel fabric is brought to life in brave and intriguing colour mixes which can be teamed with our most popular upholstery fabrics
1	<b>Camira Era*</b>	Era is a subtle, two tone polyester fabric containing stretch in both directions for ease of upholstery. The baby herringbone weave offers an understated contemporary texture while its colouring technique provides close up intrigue.
1	<b>Camira Sprint</b>	Sprint is a classic stretch knit product with a smooth macro cellular construction and a classic design that will stand the test of time
2	<b>Camira Blaze Lite*</b>	Blazer Lite is a finer version of our Blazer upholstery fabric making it lighter in weight for use on desk screens, panels and other vertical surfaces
2	<b>Camira Nexus*</b>	Nexus is a sleek and stylish technical knit, offering two dimensional stretch and comfort cushioning, in a pin prick dot matrix design effect. It's suitable for both seating and vertical surfaces
2	<b>Camira Patina</b>	Patina is designing with nature to achieve beauty with performance. The white flecks scattered across the surface are created by the flax content, just as the flowers would appear in the fields from which it is grown.
2	<b>Camira Aquarius</b>	Aquarius is a tried and tested, versatile crêpe weave fabric. It is made from 100% natural wool, which is not only rapidly renewable but also fully bio-degradable
2	<b>Kvadrat Remix</b>	Remix 3 looks unicoloured from a distance but reveals subtle details and colour contrasts when viewed close-up. The textile features a tight, minimalistic weave, and derives its lively colour play from a combination of two different mélange yarns, which each combine up to three hues.
3	<b>Camira Blazer*</b>	Blazer is a classic pure new wool upholstery fabric with a billiard cloth felted finish. It is made from premium New Zealand lambswool, where responsible farming provides the highest quality raw material
3	<b>Camira Synergy*</b>	Epitomising natural simplicity, Synergy is a wool rich fabric which is at once both irresistibly soft and ultra-high performing.
3	<b>Camira Synergy 170</b>	Synergy 170 is the panel partner to our popular wool rich upholstery fabric Synergy
3	<b>Camira Hemp</b>	Expertly woven from a blend of wool and hemp, Hemp is a fabric of natural beauty. With a soft handle and inherent flame retardancy, this sustainable textile has a classic plain weave that perfectly showcases its natural composition and multi-tonal colouration.
3	<b>Kvadrat Melange Nap</b>	Melange Nap is a woollen upholstery textile characterised by exceptional depth of colour and surprising details.
3	<b>Kvadrat Atlas</b>	Atlas was created to deliver a pioneering mélange look that compliments the existing mélanges in the Kvadrat collection

\* Acoustic Fabrics - Please visit the manufacturers website for more information





[www.quillsinteriors.co.uk](http://www.quillsinteriors.co.uk)





